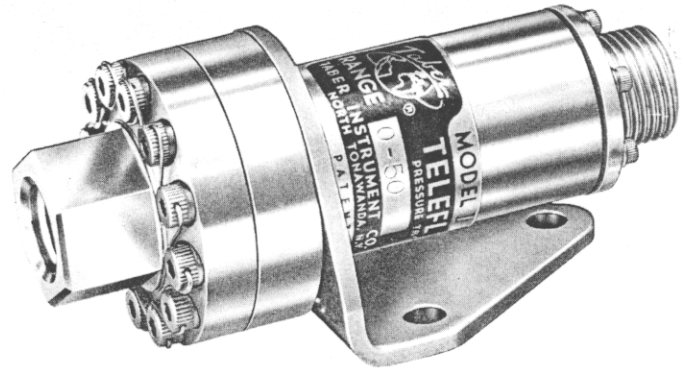
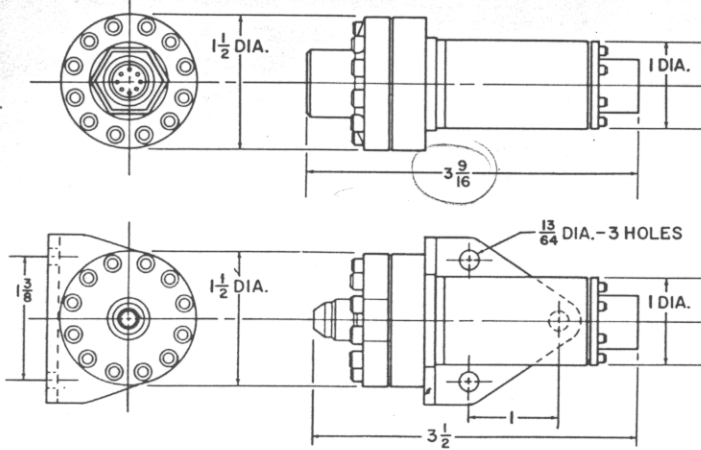


PRESSURE RANGES: 0-15, 0-20, 0-30, 0-50, 0-100, 0-200 psia



specifications

PRESSURE MEDIA: Most liquids and gases including liquid oxygen, strong alkalis and corrosive media such as red fuming nitric, nitrogen tetroxide, hydrazine, UDMH.
PRESSURE RANGES (psia): 0-15, 0-20, 0-30, 0-50, 0-100, 0-200.

MAXIMUM PRESSURE: 500 psia may be applied to any range without damage or necessitating recalibration. Higher overload capabilities available on special order.

COMPENSATED TEMPERATURE RANGE: -30°F to +170°F (other ranges on special order at additional cost).

OPERATING TEMPERATURE RANGE: -100°F to +225°F (extended ranges on special order at additional cost).

ELECTRICAL ZERO: Maximum unbalance shall not exceed ±0.02 mv/v at +70°F.

SENSITIVITY: 3.0 mv/v (0-15 psia), 4.0 mv/v (all higher ranges) nominal full scale open circuit output. Instruments for precalibrating systems can be sensitivity adjusted to 2.0 ±0.01 mv/v, 3.0 ±0.015 mv/v or 4.0 ±0.02 mv/v on special order. (See Bulletin 187/290-1 for 5.0 VDC full scale output.)

THERMAL ZERO SHIFT: Not to exceed ±0.01% FS per degree Fahrenheit while operating within the compensated temperature range.

THERMAL SENSITIVITY SHIFT: Not to exceed ±0.005% FS per degree Fahrenheit while operating within the compensated temperature range.

BRIDGE INPUT VOLTAGE: 18 volts AC/DC maximum for 350 ohm strain gage bridge. Taber laboratory calibration values are based on an input voltage of 10 VDC.

ACCELERATION: The instrument is insensitive to acceleration in all planes except axial. Axial plane sensitivity is:

0-15 psia	0.12% FS/G
0-20, 0-30 psia	0.09% FS/G
0-50 psia	0.04% FS/G
0-100 psia	0.03% FS/G
0-200 psia	0.02% FS/G

Bonded strain gages limit spurious response from shock and vibration.

HYSTERESIS: 0-15 thru 0-30 psia ranges: less than 0.5% of FS output at any given point. 0-50 thru 0-200 psia ranges: less than 0.25% of FS output at any given point.

LINEARITY: 0-15 thru 0-30 psia ranges: deviation not to exceed 0.5% of FS output from a straight line function determined by the Least Squares Method.

0-50 thru 0-200 psia ranges: deviation not to exceed 0.25% of FS output from a straight line function determined by the Least Squares Method.

INSULATION RESISTANCE: Greater than 10,000 megohms at 50 VDC and 70°F from any receptacle pin to case.

RESOLUTION: Infinite.

REPEATABILITY: Within 0.1% of FS output under identical conditions.

PRESSURE CONNECTION: Internal thread for AND-10050-4 is standard. Available on special order with ¼-inch NPT or external thread MS33656-4.

ELECTRICAL RECEPTACLE: Bendix Pygmy PTIH-10-6P or PCIH-10-6P configuration is standard.

ENCLOSURE: Entire housing and pressure cavity is of high quality stainless steels. All electrical components are hermetically sealed against adverse environmental conditions. (With exception of electrical receptacle.)

WEIGHT: Less than 8 ounces.

price list

	Model No.	Unit Price
TELEFLIGHT Pressure Transducer — Standard	187	
— Without Mounting Bracket — Calibration certificate supplied with each instrument giving millivolt output, at 6 points throughout range of instrument. Ranges: 0-15, 0-20, 0-30, 0-50, 0-100, 0-200 psia.		\$425.00
TELEFLIGHT Pressure Transducer — Sensitivity adjusted by one of two methods to provide a calibration factor of 3.0 ±0.015 millivolts output per volt input for full scale pressure. Give detailed information when ordering.	187-SA	
Shunted Output		\$ 20.00
R _c Method (The application of a standard resistor across the two negative terminals will produce a simulated output of a specific pressure.)		35.00
Bracket For Panel Mounting (with screws) L/w	185-59	\$ 3.00
Mating Electrical Plugs		
To mate with Bendix Pygmy PTIH	PT06W-10-6S	\$ 12.00
To mate with Bendix Pygmy PCIH	PC06A-10-6S	5.75

Prices F.O.B. Factory, North Tonawanda, New York, U.S.A., subject to change without notice and to taxes which may be imposed. The Taber Instrument Corporation also reserves the right to make changes without notice and at any time in colors, materials, specifications and models, and also to discontinue models.

how to order

When ordering specify the following: (1) Model No. (2) Pressure Range (3) Pressure Media (4) Pressure Connection (5) Electrical Connector (and mating connector if any) (6) Mounting Bracket (if any) (7) Sensitivity (8) Sensitivity Adjusted (if desired).

warranty

Taber Instrument warrants all parts and equipment supplied by it to be free from defects in workmanship or material under normal use and service. All such parts and equipment supplied subject to this warranty, and the Company's obligation thereunder is limited to repairing or replacing at its factory any part thereof which shall be returned, transportation charges prepaid, within 90 days from date of shipment, and which our examination shall disclose to our satisfaction to have been thus defective. This warranty is expressly in lieu of all other warranties expressed or implied, and of all obligations or liabilities on its part for damages following the use or misuse of the articles supplied. Any unauthorized disassembly or attempt at repair shall void this warranty. No agent is authorized to assume for it any liability except as set forth above.

service information

A complete department is maintained for recalibrating, repairing or rebuilding TELEFLIGHT Pressure Transducers. Instruments should be carefully packed and forwarded with a letter describing the malfunction to: TELEFLIGHT SERVICE DEPT., TABER INSTRUMENT CORPORATION, 107 Goundry Street, North Tonawanda, N. Y., U.S.A.